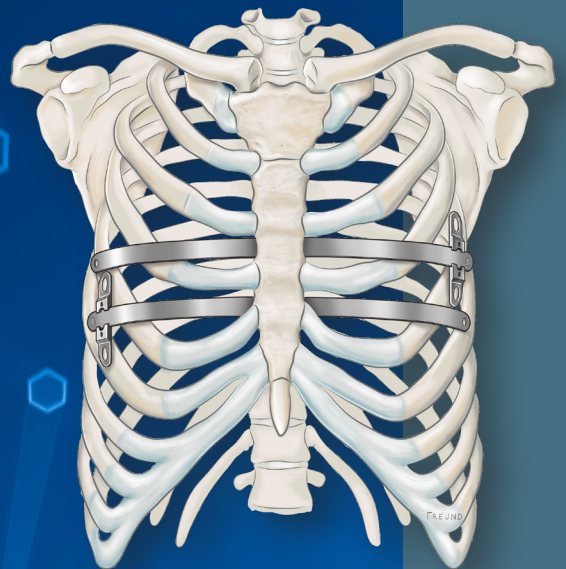


PES

PECTUS
EXCAVATUM
SYSTEM

Funnel chest Pectus excavatum



FUNNEL CHEST PECTUS EXCAVATUM

Using the Pectus Bar, the deformed bone structure of the thorax (chest wall, sternum, etc.) is moved from the inside to the outside as a result of support and counter pressure, thus correcting the deformity.

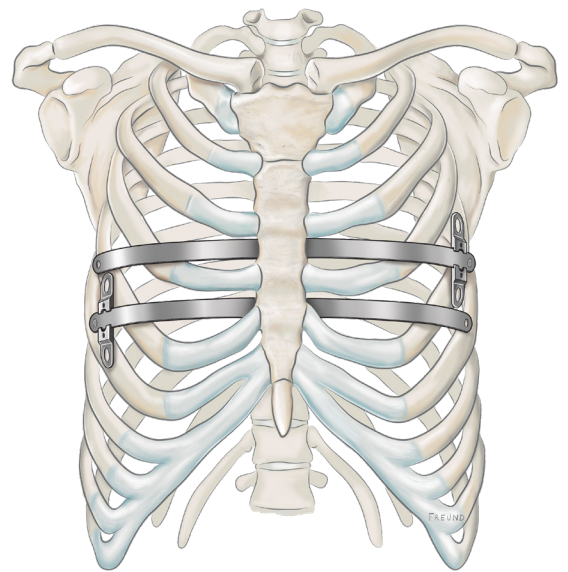
The implants are not suitable for replacing chest wall structures. With the aid of the bars it is possible to press the funnel chest outwards. However, it is not always possible to plan or foresee to what extent the short, medium and long-term correction of the deformity can be achieved.

Reduction of the sternum is performed using the tunneling instrument. The outcome achieved in this way can then be fixed and maintained by the in situ pre-shaped implant. The cosmetic outcome cannot always be predicted prior to surgery.

Age of the patients to be treated:
Pectus excavatum should not be treated with PES in children that are still growing.

Our recommendation: Application of PES implants in patients who have completed puberty.

Depending on the type of deformity, its form of manifestation, symmetry or asymmetry and complexity (concomitant scoliosis, kyphosis, extremely prominent costal arches, etc.), the implant can be exposed to increase mechanical strain post-operatively.



IMPORTANT NOTE

Before using for the first time, it is absolutely essential to read the „Instructions for Use“ . We always recommend intensive product training and briefing by MedXpert or an authorised specialist dealer prior to the first intervention using products of this system.

IMPLANTS



PECTUS BAR, SMOOTH ENDS

- Smooth ends for atraumatic implantation and explantation
- \varnothing 5 mm drill holes on both sides for insertion of a thread-through band, as well as a 022-01050 Pectus BarLock™ Pin
- Compatible with all Pectus Bar Stabilizers

024-09229	Pectus Bar, smooth ends, 229 mm
024-10254	Pectus Bar, smooth ends, 254 mm
024-11279	Pectus Bar, smooth ends, 279 mm
024-12305	Pectus Bar, smooth ends, 305 mm
024-13330	Pectus Bar, smooth ends, 330 mm
024-14356	Pectus Bar, smooth ends, 356 mm
024-15381	Pectus Bar, smooth ends, 381 mm
024-16406	Pectus Bar, smooth ends, 406 mm
024-17432	Pectus Bar, smooth ends, 432 mm



PECTUS BAR, UNIVERSAL

- Smooth ends for atraumatic implantation and explantation
- Rounded indentations placed on both sides for insertion of the Pectus Locking-Screw, Universal, and for secure attachment of the Pectus Bar Stabilizer, Universal
- \varnothing 5 mm drill holes on both sides for insertion of a thread-through band, as well as a 022-01050 Pectus BarLock™ Pin
- Compatible with all Pectus Bar Stabilizers

025-07178	Pectus Bar, Universal, 178 mm
025-08203	Pectus Bar, Universal, 203 mm
025-09229	Pectus Bar, Universal, 229 mm
025-10254	Pectus Bar, Universal, 254 mm
025-11279	Pectus Bar, Universal, 279 mm
025-12305	Pectus Bar, Universal, 305 mm
025-13330	Pectus Bar, Universal, 330 mm
025-14356	Pectus Bar, Universal, 356 mm
025-15381	Pectus Bar, Universal, 381 mm
025-16406	Pectus Bar, Universal, 406 mm
025-17432	Pectus Bar, Universal, 432 mm
025-18458	Pectus Bar, Universal, 458 mm
025-19483	Pectus Bar, Universal, 483 mm



PECTUS BAR, SERRATED ENDS

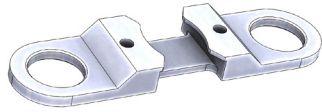
- Serrated ends for secure attachment of a Pectus Bar Stabilizers using an aid (wire, suture material, not recommended by MedXpert)
- \varnothing 5 mm drill holes on both sides for insertion of a thread-through band, as well as a 022-01050 Pectus BarLock™ Pin
- Compatible with all Pectus Bar Stabilizers

022-07178	Pectus Bar, serrated ends, 178 mm
022-08203	Pectus Bar, serrated ends, 203 mm
022-09229	Pectus Bar, serrated ends, 229 mm
022-10254	Pectus Bar, serrated ends, 254 mm
022-11279	Pectus Bar, serrated ends, 279 mm
022-12305	Pectus Bar, serrated ends, 305 mm
022-13330	Pectus Bar, serrated ends, 330 mm
022-14356	Pectus Bar, serrated ends, 356 mm
022-15381	Pectus Bar, serrated ends, 381 mm
022-16406	Pectus Bar, serrated ends, 406 mm
022-17432	Pectus Bar, serrated ends, 432 mm
022-18458	Pectus Bar, serrated ends, 458 mm
022-19483	Pectus Bar, serrated ends, 483 mm

IMPLANTS

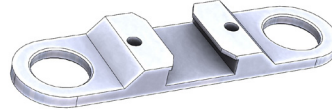
PECTUS BAR STABILIZERS

Sliding Pectus Bar Stabilizers onto the Pectus Bar prevents the implanted Pectus Bar from tilting.



022-02010

Pectus Ribas Bar Stabilizer, Low Profile

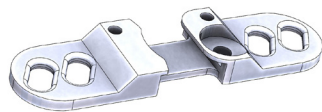


022-01010

Pectus Bar Stabilizer, Low Profile

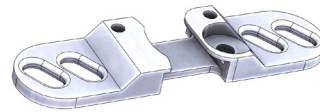
PECTUS BAR STABILIZER, UNIVERSAL

Sliding Pectus Bar Stabilizers onto the Pectus Bar prevents the implanted Pectus Bar from tilting. Using the 025-02010 Pectus Lockin Screw, the Pectus Bar Stabilizer Universal is fixed in the dedicated position.



025-02028

Pectus Bar Stabilizer, Universal, R, 2 x Ø 4 x 8 mm

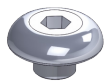


025-02029

Pectus Bar Stabilizer, Universal, L, 2 x Ø 4 x 8 mm

PECTUS LOCKING-SCREW, UNIVERSAL

Using the Pectus Locking-Screw, Universal, the Pectus Bar Stabilizer, Universal, can be secured to and locked into the Pectus Bar, Universal.



025-02010

Pectus Locking-Screw, Universal

PECTUS BARLOCK™ PIN

Pectus BarLock™ Pin for securing the Pectus Bar Stabilizer on to the Pectus Bar.



022-01050

Pectus BarLock™ Pin

ACCESSORIES

PECTUS BAR TEMPLATE

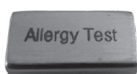
- Surgical preparation outside the body for determining a suitable implant
- Pectus Bar Templates may not be implanted



- 021-07178** Pectus Bar Template, 178 mm
- 021-08203** Pectus Bar Template, 203 mm
- 021-09229** Pectus Bar Template, 229 mm
- 021-10254** Pectus Bar Template, 254 mm
- 021-11279** Pectus Bar Template, 279 mm
- 021-12305** Pectus Bar Template, 305 mm
- 021-13330** Pectus Bar Template, 330 mm
- 021-14356** Pectus Bar Template, 356 mm
- 021-15381** Pectus Bar Template, 381 mm
- 021-16406** Pectus Bar Template, 406 mm
- 021-17432** Pectus Bar Template, 432 mm

PECTUS ALLERGY TEST PLATE

Pectus Allergy Test Plate from implant material (1.4441) for execution of a simple patch test. See separate information that has been included with the product.



020-00060

Pectus Allergy Test Plate

RECOMMENDED INSTRUMENTS

The MedXpert instrument set has been specially developed for use with the MedXpert implants and is matched to the products. MedXpert implants may only be used with the instruments specified by MedXpert.

020-00011

Pectus Tunneling Instrument, medium, scaled

Tunneling instrument for intercostal tunneling under endoscopic control and preparation for implantation.



020-00018

Pectus Tunneling instrument, round, medium, scaled acc. Schwabegger

Tunneling instrument for intercostal tunneling under endoscopic control and preparation for implantation.



020-00021

Pectus Bar Bending Forceps, reverse action

For bending the Pectus Bar and final shaping following implantation. Through placement of the Bending Cylinders 020-00025 / 020-00027 / 020-00029, the bending radius can be modified and further reduced.



020-00025

Bending Cylinder for Pectus Bars (supplement to 020-00021), 9.7 mm

020-00027

Bending Cylinder for Pectus Bars (supplement to 020-00021), 11.7 mm

020-00029

Bending Cylinder for Pectus Bars (supplement to 020-00021), 13.7 mm

Through placement of the Bending Cylinders onto the 020-00021, Pectus Bar Bending Forceps, reverse action, the bending radius can be modified and further reduced.



020-00031

Pectus Im- and Explantation Lever

Pectus Im- and Explantation Lever for rotation of the Pectus Bar into the final position.



020-00080

Applying forceps for stabilizers

Applying Forceps for securely gripping the Pectus Bar Stabilizer during both implantation and explantation, even where access to the Pectus Bar is narrow.



020-00050

Pectus BarLock™ Forceps

For insertion and secure attachment of the 022-01050, Pectus BarLock™ Pin in order to secure the Pectus Bar Stabilizer against slippage.



026-00010

Pectus screwdriver

Pectus screwdriver for turning and locking as well as for removal of the 025-02010, Pectus Locking-Screw, Universal.



ADDITIONAL INSTRUMENTS

The MedXpert instrument set has been specially developed for use with the MedXpert implants and is matched to the products. MedXpert implants may only be used with the instruments specified by MedXpert.

020-00010

Pectus Tunneling Instrument, short, scaled

Tunneling instrument for intercostal tunneling under endoscopic control and preparation for implantation.



020-00012

Pectus Tunneling Instrument, long, scaled

Tunneling instrument for intercostal tunneling under endoscopic control and preparation for implantation.



020-00019

Pectus Tunneling Instrument, round, long, scaled acc. Schwabegger

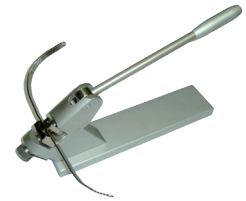
Tunneling instrument for intercostal tunneling under endoscopic control and preparation for implantation.



020-00022

Pectus Bar Table Top Bender

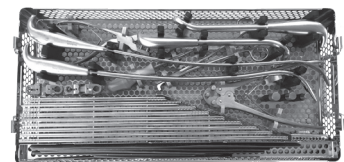
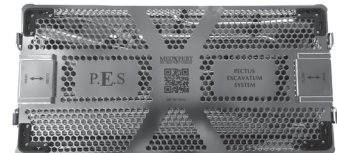
For bending the Pectus Bar according to the shape of the Pectus Bar Template.



001-30001

Sterilizing container PES, empty

The sterilizing container is used for secure transportation and sterilization of the implants and instruments.



IMPORTANT NOTE

Before using for the first time, it is absolutely essential to read the „Instructions for Use“. We always recommend intensive product training and briefing by MedXpert or an authorised specialist dealer prior to the first intervention using products of this system.





MedXpert GmbH
Max-Immelmann-Allee 19
D-79427 Eschbach

Phone +49 7634 508 563 0
Fax +49 7634 508 563 99

info@medxpert.de
www.medxpert.de

MedXpert North America LLC
609 South Kelly Avenue Suite H-1
Edmond, OK 73003 - USA

Phone +1 405 285 1671
Fax +1 405 726 8763

info@medxpertna.com
www.medxpert.de



DE 10 2006 042 277 and DE 10 2008 002 389
US 8,795,342 and US 8,900,281

REF: 99-10102
Version 02-2019-12