



NOVATECH EWS™



NOVATECH

Because Life is Precious.

Founded in 1986, we have been producing silicone stents developed by Dr. Dumon for over 30 years. In order to improve patient care, we have added many developments over the years, such as STERITALC® and various instruments for bronchoscopy.

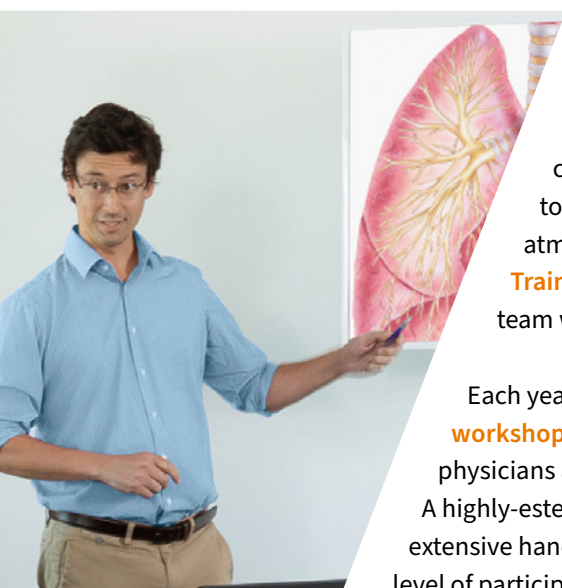


Office, production and warehouse in La Ciotat, south of France

Quality Made in Europe

Our high demand on quality, function and cost-effectiveness along with the ability to react quickly to individual needs, has earned us the trust of physicians worldwide

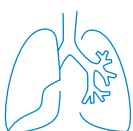
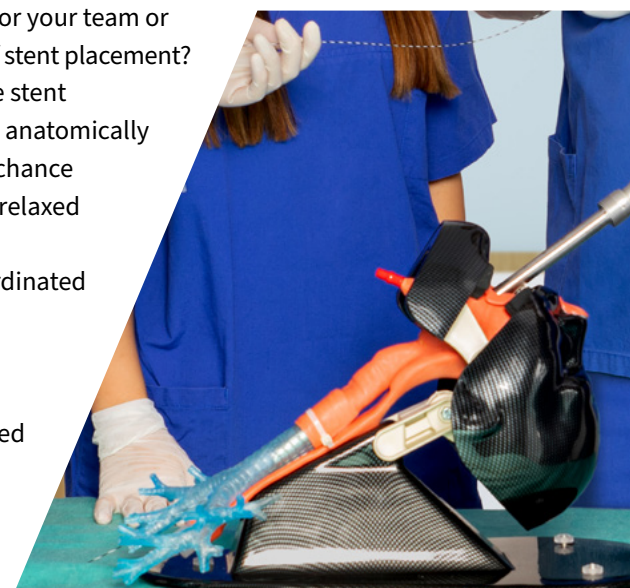
The full package. Expert advice on demand.



You wish to train new members or your team or refresh your team's knowledge of stent placement? Our qualified experts demonstrate stent placement at your location. We use anatomically correct models and give your staff a chance to handle stents and instruments in a relaxed atmosphere.

Training is important — only a well-coordinated team will achieve perfect results.

Each year, we organize **rigid bronchoscopy workshops** in France – a benefit for experienced physicians as well as beginners. A highly-esteemed faculty, small groups and extensive hands-on practice guarantee a high level of participant satisfaction.





Our extensive experience and our strict quality standards serve one goal:

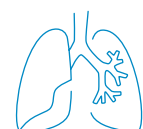
To provide products that give patients a better quality of life.



Since 2003 **Novatech SA** has been part of bess group in Berlin, Germany – a family-owned and managed medical device company with more than 30 years of expertise in medical device technology.



NOVATECH
Finest Products for Interventional Pulmonology



NOVATECH EWS™

For endoscopic closure of segmental and subsegmental bronchi



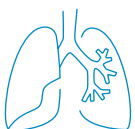
- Quick closure in acute situations
- Conical shape with studs on the outside
- Radiopaque
- Made of implantable silicone (> 29 days)
- Developed in close collaboration with Dr. Yoichi Watanabe, Okayama, Japan

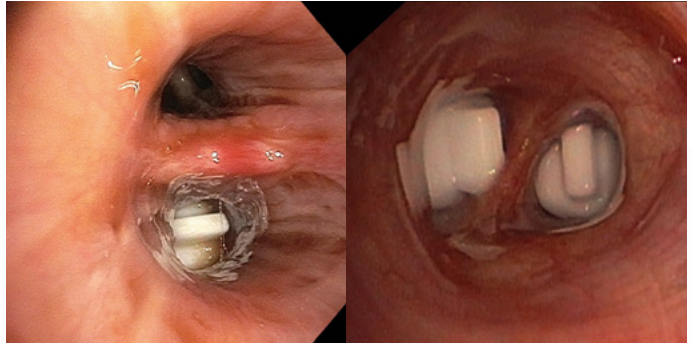
Indication

- Pneumothorax
- Bleeding of the segmental or subsegmental bronchi

„Spigots represent a relatively simple method of segmental blockage in the presence of bleeding for bridging the acute situation until a definitive local therapy can be introduced.

Pneumatologie 2017; 71(S 01): S1-S125
DOI: 10.1055/s-0037-1598346





EWS™ in situ, in correct position.

Image courtesy of P D Dr. med. K. Darwiche (Essen, Germany)



EWS™ offer the benefit of a targeted closure at the (sub)segment level, whereby the ventilation of adjacent areas is not hindered.

Safe and durable

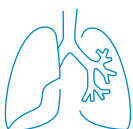
A study of 63 patients in Japan, including 40 cases of non-treatable pneumothorax, 12 cases of pyothorax with a fistula and 7 cases of pulmonary fistula, has shown that the use of EWS™ is safer and delivers longer lasting positive results than conventional methods.

After locating the affected bronchi with a balloon catheter (alternative x-ray, etc.), the EWS™ is positioned using a flexible bronchoscope and forceps that are guided through the working channel of the bronchoscope. EWS™ was successfully positioned in 96.7% of cases. The air loss was stopped or significantly reduced in 77.6% of cases. No serious complications occurred.¹

¹ Watanabe Y. et al. Bronchial Occlusion with Endobronchial Watanabe Spigot, J Bronchol., 10, 4, 2003

EWS™ Endobronchial Watana Spigots, sterile, packed in individual blisters

REF	Quantity	Details
01EWS12A	12 EWS™	3 × S, 6 × M, 3 × L
01EWS3S	6 EWS™	6 × S
01EWS3M	6 EWS™	6 × M
01EWS3L	6 EWS™	6 × L



Request information about further pulmonology products:



STERITALC®
for Talcum Pleurodesis



Instruments
for Bronchoscopy



NOVATECH® GSS™
Silicone Airway Stents



Leufen aerstent®
self-expanding
Nitinol Stents

The products in this catalog are **CE**-marked.



Novatech SA — La Ciotat, France

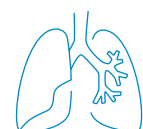


Please note that only the current instructions for use apply. Details in this catalog about the use of products serve as a guide only and reflect the information available at the time of print. If necessary, please request a current version!



The instructions for use for some of our products are available only in electronic form (in pdf format) on our website. Please see the product label for the required access information.

Please note that product availability may vary by country. Please contact us for details.



EWS™

Endobronchial Watanabe Spigots



NOV-MIR-PCA-EWS_EN Rev.: 1



a bess group company

Novatech SA

capital stock: 160.000 € • 398 941 260 RCS Marseilles
TVA CEE FR59398941260 • certified according to EN ISO 13485
Jurisdictional venue / seat of the company:
Z.I. Athélia III — 1058, Voie Antiope
F—13705 La Ciotat Cedex, France
Tel. +33 (0) 442 98 15 60
info@novatech.fr • www.novatech.fr

